

## Expressive Arts and Design

*Creating with Materials, Being Imaginative and Expressive.*

Our art will be influenced by Mini-beasts and under the Sea, whilst looking at other artists' work such as Eric Carle, Ella Bailey, Lydia Monks and James Mayhew, to name a few.

We will also create pictures around what we are interested in at the time. We will use powder paint to mix our own paint and use different resources to join and attach things together.

We will be part of a whole school project to create 2D and 3D art work to be displayed in the Winchester art gallery.

We will sing songs and rhymes and follow the Hampshire Music Service plans to learn other aspects of music with a focus on Sea creatures and the beach.

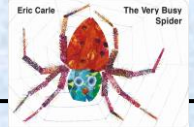


## Communication and Language

*Listening and Attention, Understanding and Speaking*

Reading stories about mini-beasts and sea creatures along with other stories and information, will influence our discussions. We will continue to develop our communication skills through whole class and group activities, as well as through our continuous provision.

The children will continue to tell their own stories (Helicopter stories) that we will act out.



## Mathematics

*Number, Numerical Patterns.*

Our maths learning will continue to develop in line with the Early Years Curriculum, enhancing the skills we have already learnt.

This learning will take place in whole class, groups and enhanced focus opportunities as well as through the learning led by the children. We will use Numberblocks to enhance this learning.

Being secure with the number bonds of 5, knowing some bonds of 10 and counting to and beyond 20 will be a focus.

## YR Robins Class Summer Term

Some of our focus areas will be –Mini-beasts and Under the Sea and, of course, the children's own interests.



## Personal, Social and Emotional Development

*Self-Regulation, Managing Self, Building Relationships.*

Our friendships have been developing well and we will continue to celebrate each other's birthdays as and when they happen taking an interest in the different ways we celebrate them.

During PSHE we will focus on 'Being my Best' and 'Growing and Changing'.

## Physical Development

*Gross Motor Skills and Fine Motor Skills*

We will continue our weekly PE slots with the PE Coach focusing on team games. In the second part of the term, we will be taught some tennis skills by a Tennis Coach.

Our fine motor skills will continue to develop through the continued use of drawing and painting resources as well as using scissors and various things to join bits together.



## Understanding the World

*Past and Present, People Cultures and Communities. The Natural World.*

We will use our class computer and interactive board to enhance our learning. Bee-bots are available as part of the enhanced provision so the children can programme them to go on mini adventures.

We will become mini-beasts explorers and learn about the life-cycle of butterflies through observing caterpillars and the changes that they go through.

We will continue to develop and look after our garden and look for mini-beasts and create habitats for them.

Through our PSED curriculum we will learn about being our best and growing and changing.

Our walks in the community will continue developing our local knowledge of the village and the people and creatures that make it their home.

## Literacy

*Comprehension, Word Reading, Writing*

Our phonics will develop through the practising of taught sounds and tricky words, ensuring they are secure before moving into Y1. A focus will be on blending the sounds (phonemes) to read and write short sentences that can be read by others. The children will be increasingly encouraged to write their sentences and stories independently.

Please continue to help your child with their sounds, reading and letter formation. You could also support them to write short sentences about mini-beasts and sea creatures, or they could write about things that interest them.

